

# WIRELESS TELEMETRY LOAD LINK

## DESCRIPTION

The Wireless Telemetry Load Link is a strain gauged link with an inbuilt battery powered wireless transceiver which communicates with our AWS Wireless Telemetry Load Measurement System. With a simple to change extra-long life battery, and a large range of load capacities, it is ideal for applications in systems where running cables to a load link is not possible.



## SPECIFICATIONS

- Range 5 to 250 Tonne
- Transmission Distance up to 200m
- For use with standard shackles
- 5 Step Linearisation
- Auto Power Down
- Sealed to IP67
- Meets the CE RED directive, and FCC regulations.

## FEATURES & BENEFITS

- Long battery life
- Error free data transmission
- Active repeater to extend transmission range
- Remote on/off
- Environmentally sealed
- Internal aerial
- Other capacities available on request

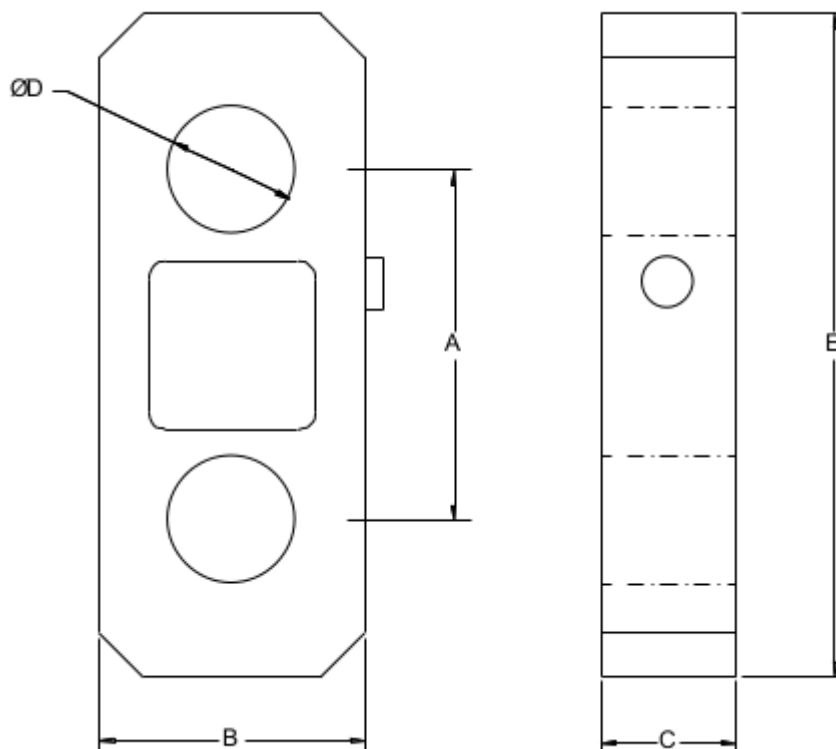
Specifications		
Capacities	5-250	tonne
Radio Frequency	2.4	GHz
Accuracy (above 10% of FSD)	±0.05	% of reading
Compensated Temp. Range	-10 to +40	°C
Operating Temp. Range	-20 to +60	°C
Temp. Coefficient on Zero	<0.005	% FRO/°C
Temp. Coefficient on Span	<0.003	% FRO/°C
Safe Overload	150	%
Ultimate Overload	400	%
Insulation	>500 @100Vdc	MΩ
Environmental Protection	IP67	

Specifications subject to change without notice

## DIMENSIONS

Capacity (te)	A	B	C	DØ	E	Weight (Kg)
5	137	105	41.5	30	193	1.5
12	149	105	41.5	38	239	2.0
25	160	125	55	53	284	4.5
35	175	138	55	60	335	5.5
50	198	150	75	73	375	10.0
100	275	220	120	100	500	28.0
150	300	260	120	110	550	50.0
200	325	290	159	135	660	75.0
250	365	304	189	145	720	90.0

All dimensions in mm



Advanced Witness Systems Ltd © 2023

### MANUFACTURER INFORMATION

Advanced Witness Systems Ltd  
 Unit 8  
 Beaumont business Centre  
 Beaumont Close  
 Banbury  
 Ox16 1TN  
 Tel: +44 (0)1295 266939  
 Email: sales@awstorque.co.uk

### SUPPLIER INFORMATION

Data was correct at time of publication.  
 Catalogue Page 70