

N-TYPE ANNULAR TRANSDUCER

DESCRIPTION

The AWS N-type Annular Torque Transducer range (NATT), is designed to accurately measure torque values, in a variety of industries. They function either as a reaction torque transducer taking the reaction torque through the transducer, or with additional drive plates, attached to the flanges, convert them to direct drive inline transducers.

With optimised torque ranges, the transducer outputs a mV signal proportional to the supply voltage and torque. The transducer contains a memory chip in which a small selection of parameters, including serial number, model number, and calibration value, are held, compatible for setting some manufacturers display units.

SPECIFICATIONS

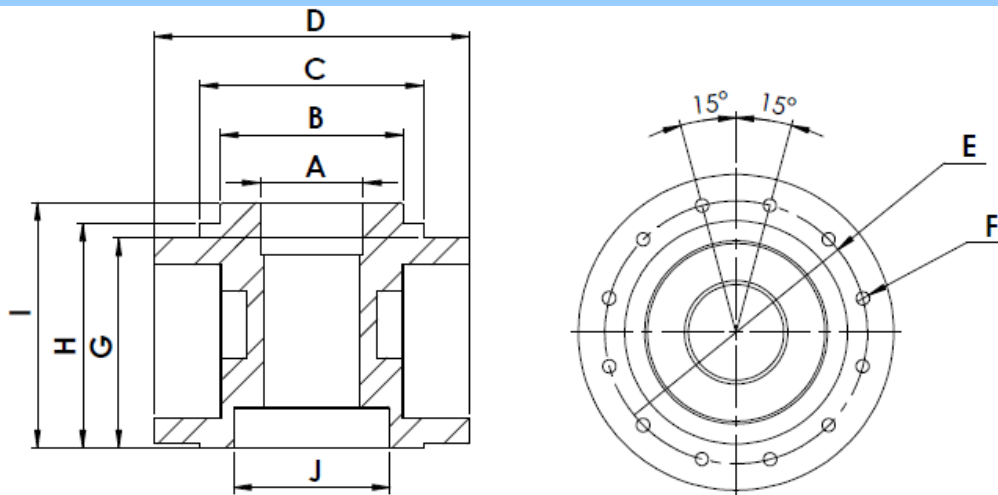
Model: NATT-	3038	3030	3031	3032	3033	3034	3035	3046	3036	3037
Ranges (kNm):	2	3	5	10	20	50	100	120	200	300

Accuracy:	Better than 0.1% of reading from 10 to 100% of rated output. See calibration certificate for full results.
Communications:	2 wire EEPROM instrument set up program.
Power and Display:	Can be used with a mV/V display, but is also compatible with other manufacturers' displays.
Overload capability:	125%
Maximum mechanical overload:	160% of range stated.
Maximum bridge supply voltage:	10V
Temperature range:	-10°C to +50°C.
Temperature coefficient:	On Zero: 0.01% per °C On Span: 0.03% per °C
Connector:	Mil C 26482 series. 6 pin. Shell size 10.
CE:	2004/108/EEC
EMC:	BS EN 61326:2013
Signal Output	2mv/v Strain gauged bridge
Bridge Impedance	350Ω
Max Power Requirement	10V 20mA DC

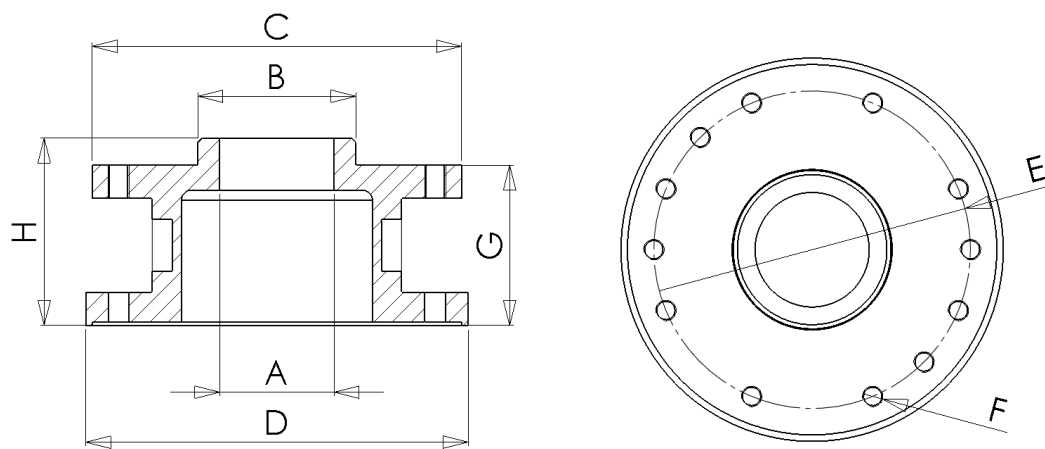


DIMENSIONS

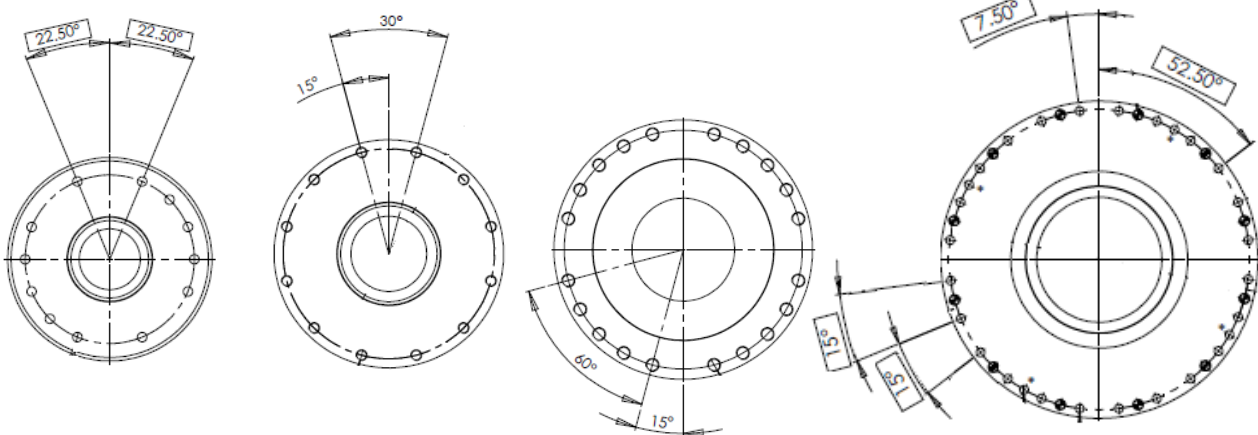
Dim (mm)	3038/3030	3031	3032	3033	3034	3035	3046	3036	3037
A	39	55	55	70	125	125	125	205	205
B	69	76	76	95	219.92	219.92	219.92	239.92	239.92
C	84.1	177.8	177.8	212	315	315	315	520	520
D	119	184	184	212	315	315	315	520	520
E	99.06	152.4	152.4	195	290	290	290	492	492
F	M5X0.8	M10X1.5	M10X1.5	M10X1.5	M16X2.0	M16X2.0	M16X2.0	M16X2.0	M16X2.0
G	79	77	77	97	126	126	126	130	130
H	84.5	90	90	76	110	110	110	146	146
I	92.5	-	-	-	-	-	-	-	-
J	59	-	-	-	-	-	-	-	-
No. Bolts	24	24	24	24	40	40	40	68	68



3038 AND 3030



3031 AND ABOVE



3031 & 3032

3033

**3034, 3035
& 3046**

3036 & 3037

Advanced Witness Systems Ltd © 2025

MANUFACTURER INFORMATION

Advanced Witness Systems Ltd
Unit 8
Beaumont Business Centre
Beaumont Close
Banbury
OX16 1TN
Tel: +44 (0)1295 266939
Email: sales@awstorque.co.uk

SUPPLIER INFORMATION