



Intelligent Transducer Mounting Bracket

DESCRIPTION

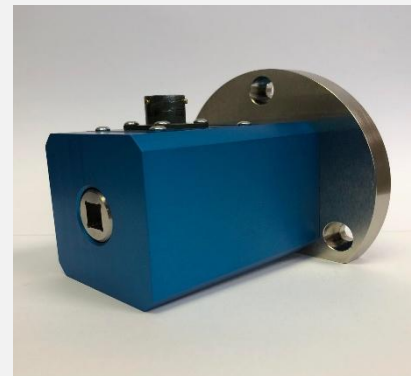
The AWS Ltd Intelligent Transducer Mounting Bracket (ITMB) range is designed to provide reaction to Intelligent Inline Torque Transducers (IITTs) during a supported or unsupported torque calibration procedure or any other need.

It can also be used to mount the IITT vertically using the outer three bolt holes. These have 120 degrees equidistant spacing (M8 for ITMB-1024, 1025, 1026 and M12 for ITMB-1027 and 1128).

The IITT is attached to the ITMB using a pattern of either 2 M4 Bolts (ITT-1018) or 4 M5 Bolts (IITT-1012-1016 & 1070). These are bolted into the reaction end of the transducer housing.

There are 5 sizes of ITMB with a 1/4", 3/8", 1/2", 3/4", 1" female square drive. Two of the ITMBs the 1025, 1027 can be used with Precision Torque Adaptors to interface with 1/4" and 1/2" IITT transducers respectively.

ITMB-1129 is the Base Plate used to vertically mount the Intelligent Transducer Mounting Brackets. This can be produced to attach to your current calibration setup.



SPECIFICATIONS

Model: ITMB -	1024	1025	1026	1027	1128
Ranges:	10Nm	50Nm	250Nm	1000Nm	1500Nm
Square Drive Size:	1/4"	3/8"	1/2"	3/4"	1"





DIMENSIONS

Model	Dimension (mm)									Weight (kg)
	A	B	C	D	E	F	G	H	I	
ITMB – 1024	4	5	36	25	90	8	M6	25	50	1/4"
ITMB – 1025	4	5	36	25	90	8	M6	25	50	3/8"
ITMB – 1026	5	5	36	25	90	8	M6	25	50	1/2"
ITMB – 1027	5	5	55	40	150	12	M10	40	80	3/4"
ITMB – 1128	-	5	55	-	150	12	M10	40	80	1"
ITMB – 1129	6.5	10.5	80	50	180	12.5	100	10	16	-

* The face mounting holes are in a square, centrally located around the square drive.

