

1Nm N-TYPE IN-LINE TORQUE TRANSDUCER

DESCRIPTION

The AWS LTD N-Type In-Line Torque Transducer range (NITT), is designed to accurately measure torque values, in a variety of industries. With optimized torque ranges, the transducer uses a standard analogue connection through a male MIL C connector, from a full active Wheatstone bridge, outputting a mV/V reading.

The transducer contains a memory chip in which a small selection of parameters, including serial number, model number, and calibration value, are held, compatible for setting some manufacturers display units.

There is an option (using the In-line Transducer Mounting Bracket, purchased separately) to bench mount the transducer in either a vertical or horizontal position.

This transducer is can either be Male SQ drive to Male SQ drive or Male SQ to Male HEX drive. There are 2x M4 threaded holes in the reaction end and bottom surface for bolting.

SPECIFICATIONS

Model: NITT-	3112	3112H	3111	3111H	3018	3018H
Ranges:	0.01 - 0.25Nm	0.01 0.25Nm	0.02-0.5Nm	0.02-0.5Nm	0.04-1Nm	0.04-1Nm
Drive Size:	1/4" SQ	1/4" HEX	1/4" SQ	1/4" HEX	1/4" SQ	1/4" HEX

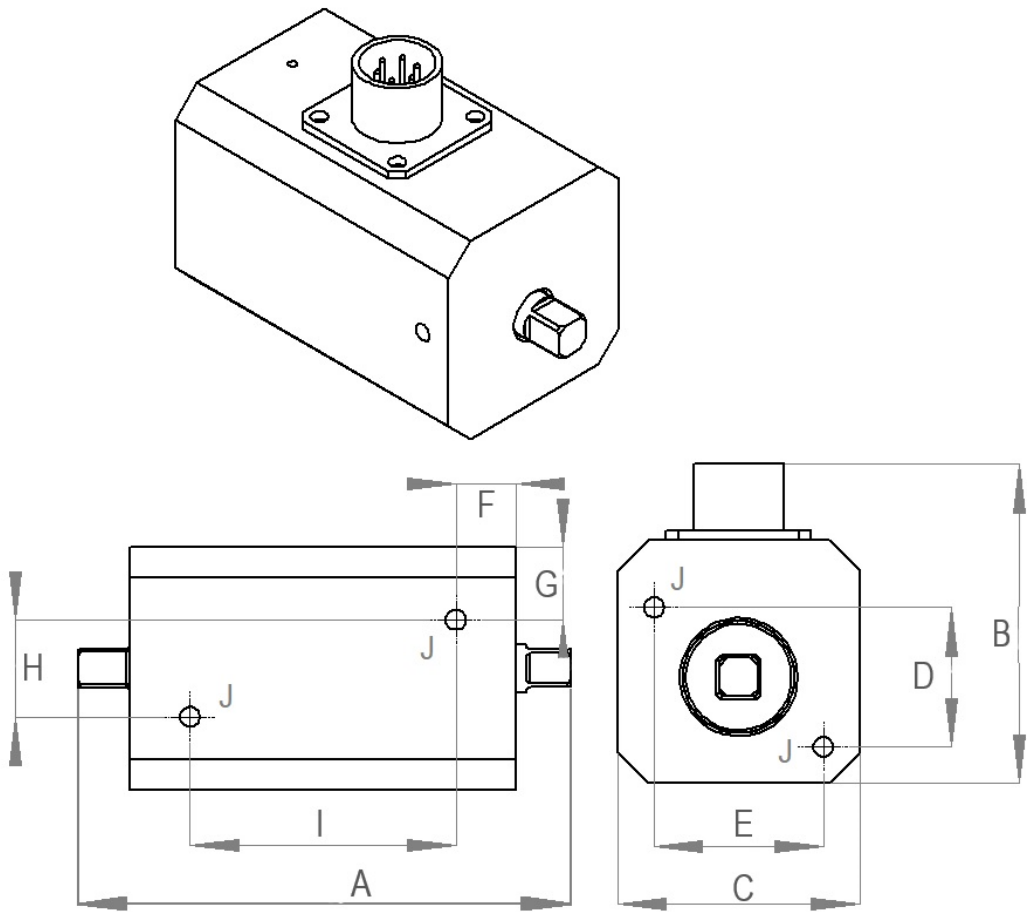
Accuracy:	Better than 0.1% of reading from 10 to 100% of rated output. See calibration certificate for full results.
Signal output	2 mV/V Strain gauge
Communication:	2 wire EEPROM instrument set up program.
Overload	120%
Capacity:	
Bridge Impedance	350 Ω
MAX voltage requirement	10V DC 30mA
Power and Display:	Requires DC power supply and Dedicated mV meter
Maximum mechanical overload:	150%
Operating Temperature:	-10°C to +50°C.
Connector:	Mil C 26482 series. 6 pin. Shell size 10.
CE:	2014/30/EU
EMC:	BS EN 61326:2007



DIMENSIONS

Dimensions for 3112 available on request.

Model	Dimension (mm)								
	A	B	C	D	E	F	G	H	I
NITT-3111	82	53	40	25	25	10	12	16	44
NITT-3018	82	53	40	25	25	10	12	16	44



Mounting Tapped Hole "J"	Square Drive	Weight (Kg)
M4	Male 1/4"	0.3

Advanced Witness Systems Ltd © 2025

MANUFACTURER INFORMATION	SUPPLIER INFORMATION
Advanced Witness Systems Ltd Unit 8 Beaumont business Centre Beaumont Close Banbury OX16 1TN Tel: +44 (0)1295 266939 Email: sales@awstorque.co.uk	