

# INTELLIGENT IN-LINE TORQUE TRANSDUCER

## DESCRIPTION

The AWS LTD Intelligent In-Line Torque Transducer range (IITT), is designed to accurately measure torque values, in a variety of industries. With optimised torque ranges, the transducer contains our Intelligent Instrumentation Package, outputting using CAN-BUS protocol to communicate with the AWS LTD Professional Transducer Display (PTD). This digital communication eliminates signal loss when using long lengths of cable, providing flexibility in communicating with other devices and systems. There is an option (using the In-line Transducer Mounting Bracket, purchased separately) to bench mount the transducer in either a vertical or horizontal position.

A simple 2 step calibration. Stores serial & model number, capacity, calibration coefficient, units of calibration, and conversion to other torque units.

## SPECIFICATIONS

Model: IITT-	1011	1012	1013	1014	1015	1016	1070	1017
Ranges:	0.1- 2.5Nm	0.4- 10Nm	2- 50Nm	10- 250Nm	20- 500Nm	40- 1000Nm	60- 1500Nm	0.1- 3kNm
Square Drive Size:	1/4"	1/4"	3/8"	1/2"	3/4"	3/4"	1"	1 1/2"

**Accuracy:** Better than 0.1% of reading from 10 to 100% of rated output. See calibration certificate for full results.

**Modes:** **Run:** For Dial-type and Electronic Wrenches and Screwdrivers.

**Peak:** For Cam-type Wrenches and Screwdrivers.

**1<sup>st</sup> Peak:** For Click-type Wrenches and Screwdrivers, retains reading until manually cancelled or for 3 seconds if auto cancel option is chosen.

**Communications:** Communications via can bus. (use with the AWS PTD-1010 power & display unit).

**Power and Display:** Requires only a single D.C power supply (use with AWS PTD-1010, power and display is provided).

**Overload capability:** 125%

**Maximum mechanical overload:** 160% of range stated.

**Operating Temperature:** -10°C to +50°C.

**Connector:** Mil C 26482 series.  
6 pin. Shell size 10.

**CE:** 2014/30/EU

**EMC:** BS EN 61326-1:2013

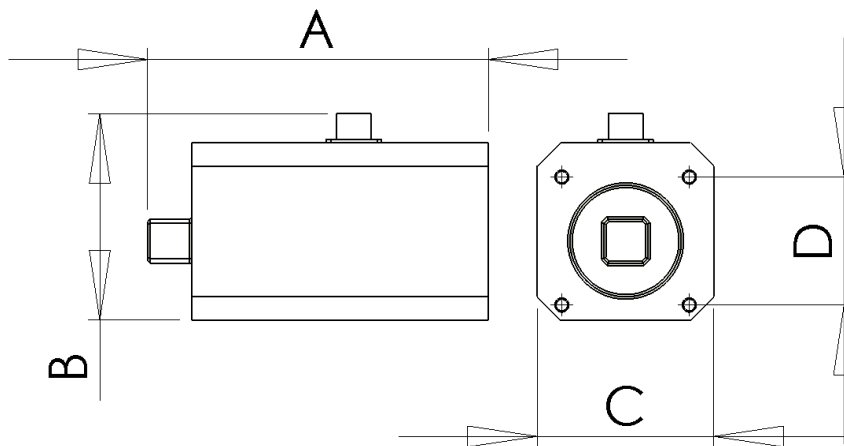
**NATO Stock No:** IITT-1011: 6625-22-623-1635  
IITT-1012: 6625-22-623-1636  
IITT-1013: 6625-22-623-1857  
IITT-1014: 6625-22-623-1635  
IITT-1015: 6625-22-623-1641



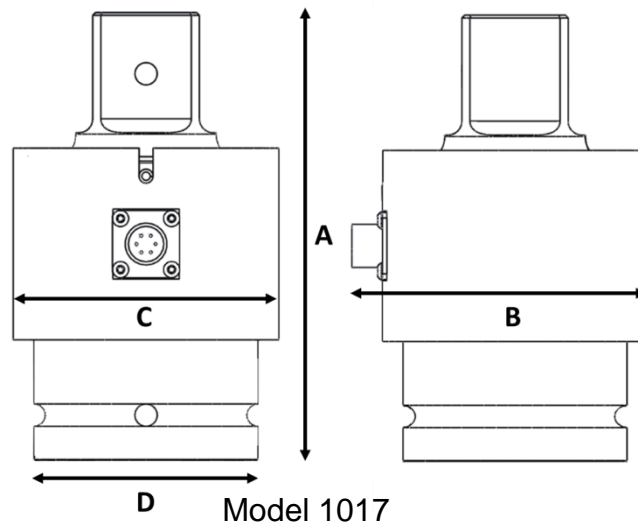
## DIMENSIONS

Model	Dimension (mm)				Face Mounting Tapped Hole*	Square Drive	Weight (Kg)
	A	B	C	D			
IITT-1011	100	75	60	36	M5	1/4"	1.0
IITT-1012	100	75	60	36	M5	1/4"	1.0
IITT-1013	100	75	60	36	M5	3/8"	1.0
IITT-1014	115	75	60	40	M5	1/2"	1.2
IITT-1015	150	90	75	55	M5	3/4"	2.6
IITT-1016	150	90	75	55	M5	3/4"	2.7
IITT-1070	150	90	75	55	M5	1"	2.8
IITT-1017	160	106	95	80	N/A	1 1/2"	3.8

\*The face mounting holes are in a square, centrally located around the square drive.



Models 1011-1016 & 1070



Model 1017

Advanced Witness Systems Ltd © 2025

MANUFACTURER INFORMATION	SUPPLIER INFORMATION
Advanced Witness Systems Ltd Unit 8 Beaumont business Centre Beaumont Close Banbury OX16 1TN Tel: +44 (0)1295 266939 Email: sales@awstorque.co.uk	