

# KEPLER 4 FOR CONFORMITY

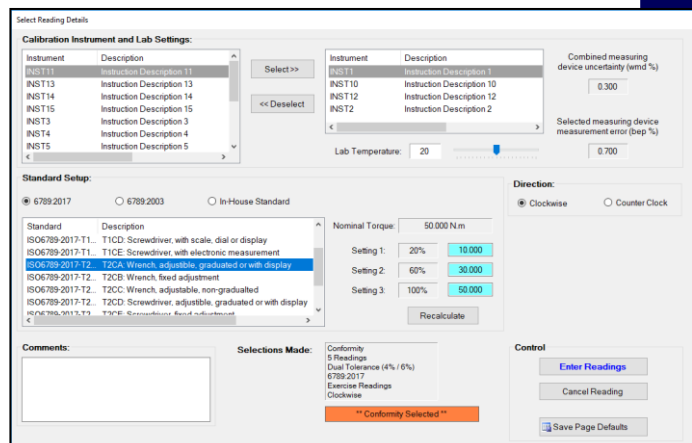
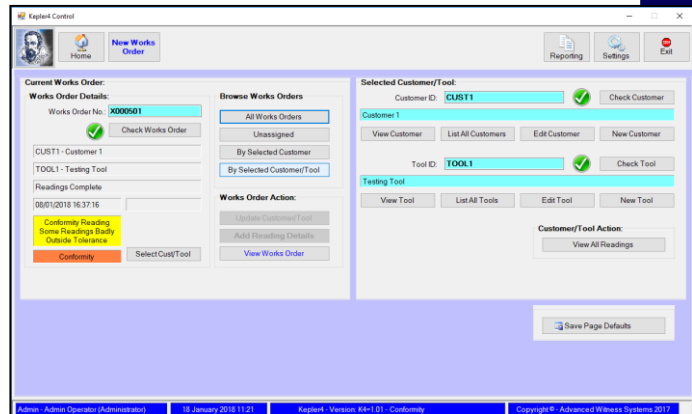
**The program for the certification of torque wrenches to BS EN ISO 6789:2017 Part 1, BS EN ISO 6789:2003, or your own in-house standards, and for keeping track of each individual wrench.**



Kepler 4 is built around a new works orders database, which ties together the customer, tool, model, reading & certificate.

## KEY FEATURES INCLUDE

- Complies with BS EN ISO 6789:2017 Part 1, allowing the automatic calculation of the mean deviation and mean value for each setting.
- Calculates the deviation for each reading, and indicates by colour whether the reading is within tolerance to the selected standard.
- Powerful search function allows historic conformity certificates to be easily found from searching by customer, tool or model; works order number or certificate number.
- Bespoke templates easily created for certificates, reports and labels.
- Auto or manual certificate numbering.
- Tool performance & data input via COM port and keyboard. Option for bar code direct entry.
- Databases can be stored locally or on a server for more efficient backup.
- Data output and report generation collated and filtered from any combination of good and out of tolerance tools.
- All certificate print details recorded. Enables exact reproduction ensuring full traceability.
- A Miscellaneous Tools feature, allowing storage of non torque tool information for use in recording the calibration of Miscellaneous Tools, generating overdue tool reports, and certificate front pages.
- Exporting of results data as a csv file for use in other programs.



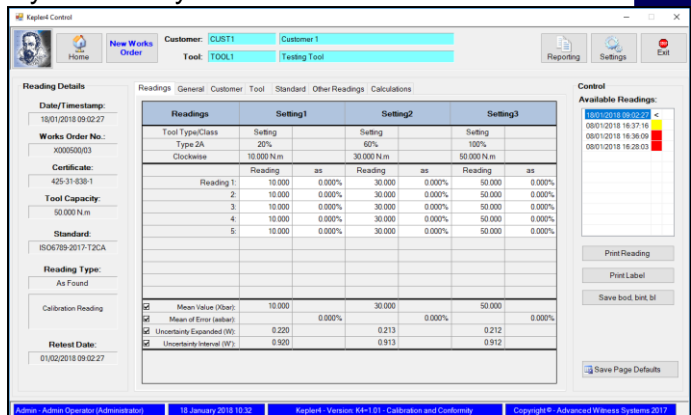
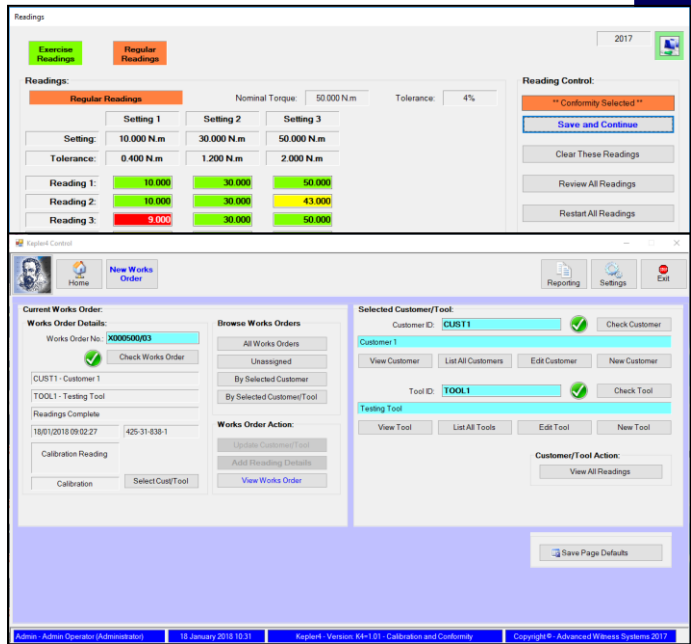
Advanced Data & Measurement Systems is a Trading name owned by  
Advanced Witness Systems Ltd © 2023

Data was correct at time of publication.

Catalogue Page 59

## OTHER FEATURES INCLUDE

- Option to operate in 6789:2003 to allow phased migration to 6789:2017.
- Cloning facility speeds multiple tool data entry.
- Multiple operator accounts for users, maintainers & administrators (with passwords).
- Import and Export reports into text or spreadsheet formats for more efficient database backup.
- Databases can be converted from Kepler 3, 2002 and 2000 allowing faster start up for previous customers.
- Multiple translations available, including the facility to create your own translation.
- Comprehensive user manual.
- Free demonstration and 6 months full help and support included in purchase.
- Certificate conversion available on enquiry.



## SYSTEM REQUIREMENTS:

Minimum Screen Resolution: 1280x768.  
 Software is a .NET application using an SQL Database.  
 Minimum System: i5 Processor or equivalent, 4GB RAM, on board graphics.  
 Keyboard & Mouse Interface.

*Disclaimer: This datasheet may not reflect the latest version of the software. For more information, visit our website: [www.awstorque.co.uk](http://www.awstorque.co.uk).*

## ALSO AVAILABLE: KEPLER 4 FOR CALIBRATION, AND KEPLER 4 COMBINED

Advanced Data & Measurement Systems is a Trading name owned by  
 Advanced Witness Systems Ltd © 2023

MANUFACTURER INFORMATION	SUPPLIER INFORMATION
Advanced Witness Systems Ltd Unit 8 Beaumont Business Centre Beaumont Close Banbury OX16 1TN Tel: +44 (0)1295 266939 Email: <a href="mailto:sales@awstorque.co.uk">sales@awstorque.co.uk</a>	