

KEPLER 4 FOR CALIBRATION

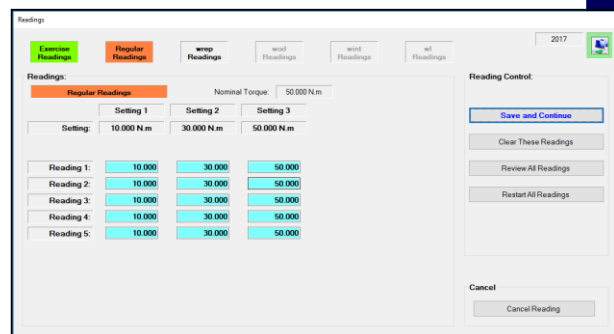
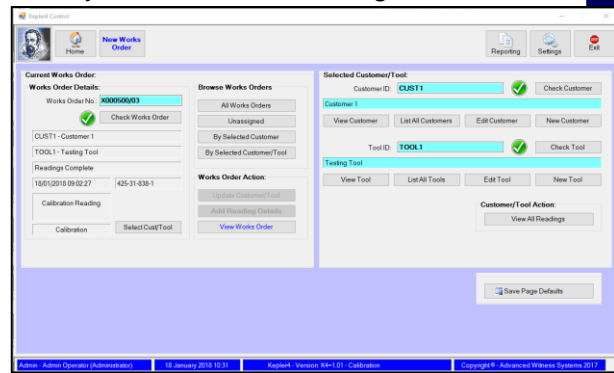
The program for the calibration of torque wrenches to BS EN ISO 6789:2017 Part 2, BS EN ISO 6789:2003 or your own in-house standards, and for keeping track of each individual wrench.



Kepler 4 is built around a new works orders database, which ties together the customer, tool, model, reading & certificate.

KEY FEATURES INCLUDE

- Complies with BS EN ISO 6789:2017 Part 2, allowing the automatic calculation using new formulae of the mean, deviation and combined uncertainty of each set of readings, for each torque tool.
- Powerful search function allows historic calibration and conformity certificates to be easily found from searching by customer, tool or model; works order number or certificate number.
- Calibrates both square and hexagonal drive wrenches.
- Full tracking of tools calibration performance and history. Produce a report listing tools that require calibrating.
- The ability to calculate average values of uncertainties Bod, Bint and BI over the last 10 calibrated tools of the same model.
- Bespoke templates easily created for certificates, reports and labels. Auto or manual certificate numbering.
- Auto or manual certificate numbering.
- Tool performance & data input via COM port and keyboard. Option for bar code direct entry.
- All certificate print details recorded. Enables exact reproduction ensuring full traceability.
- Option to operate in 6789:2003 to allow phased migration to 6789:2017.
- The ability to Colour the Calibration, to apply colour indicators to the results to show whether the deviation is within tolerance for the tool type as defined in ISO 6789:2017 Part 1. This can also be displayed on printed reports.
- A Miscellaneous Tools feature, allowing storage of non torque tool information for use in recording the calibration of Miscellaneous Tools, generating overdue tool reports, and certificate front pages.

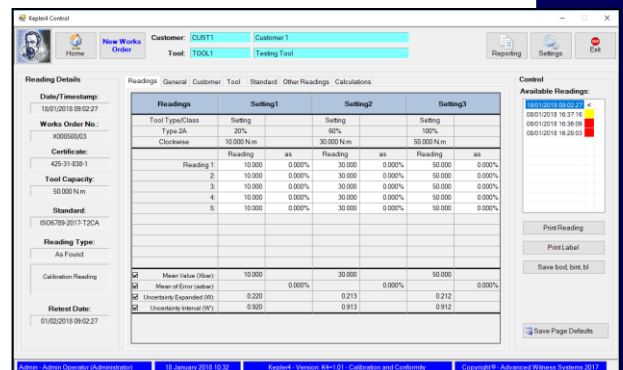
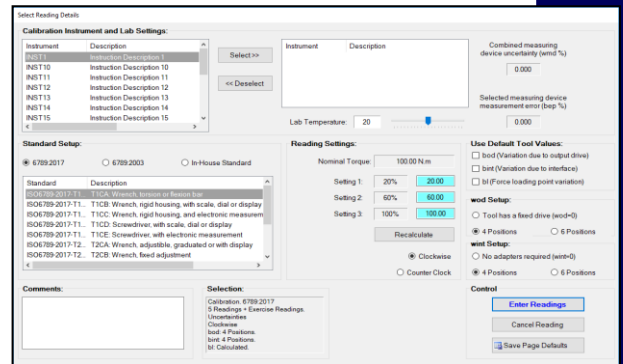
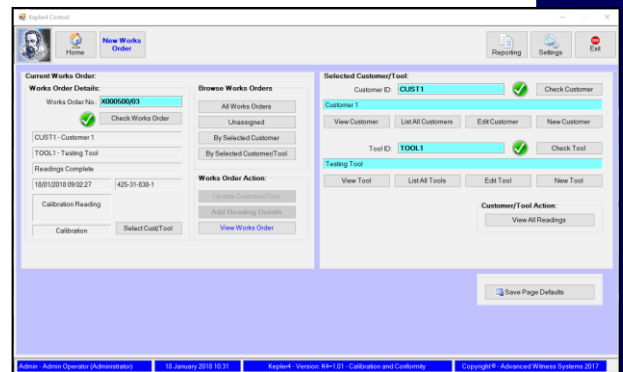


Advanced Data & Measurement Systems is a Trading name owned by
Advanced Witness Systems Ltd © 2023

Data was correct at time of publication.
Catalogue Page 61

OTHER FEATURES INCLUDE

- Exporting of results data as a csv file for use in other programs.
- Cloning facility speeds multiple data entry.
- Import and Export reports into text or spreadsheet formats for more efficient database backup.
- Databases can be converted from Kepler 3, 2002 and 2000 allowing faster start up for previous customers.
- Databases can be stored locally or on a server for more efficient backup.
- Multiple translations available, including the facility to create your own translation.
- Data output and report generation collated and filtered from any combination of good and out of tolerance tools.
- Comprehensive user manual.
- Free demonstration and 6 months full help and support included in purchase.
- Certificate conversion available on enquiry.
- **NEW!** K factor verification to UKAS M3003 Appendix's B and C using external spreadsheet module (Sold Separately).



SYSTEM REQUIREMENTS:

Minimum Screen Resolution: 1280x768.
 Software is a .NET application using an SQL Database.
 Minimum System: i5 Processor or equivalent, 4GB RAM, on board graphics.
 Keyboard & Mouse Interface.

Disclaimer: This datasheet may not reflect the latest version of the software. For more information, visit our website: www.awstorque.co.uk.

ALSO AVAILABLE: KEPLER 4 FOR CONFORMITY, AND KEPLER 4 COMBINED

Advanced Data & Measurement Systems is a Trading name owned by
 Advanced Witness Systems Ltd © 2023

MANUFACTURER INFORMATION	SUPPLIER INFORMATION
Advanced Witness Systems Ltd Unit 8 Beaumont Business Centre Beaumont Close Banbury OX16 1TN Tel: +44 (0)1295 266939 Email: sales@awstorque.co.uk	